

RX SCISSOR LIFTS

Alignment Lift Racks for Passenger Vehicles



Reach new levels in your shop



10,000 to 16,000-lb.
capacities



24 or 26-in. wide
runways



Up to 195" 2-wheel
alignment wheelbase



Fully Integrated
Alignment capable

RX scissor alignment lift racks at-a-glance

MAXIMUM PRODUCTIVITY. MINIMUM SPACE.



Wide runways

Wheelbase choices allow fits for every shop, with drive-on ease for vehicles up to 92" wide



Corrosion-resistant, stainless steel turnplates

Choose from automatic lock/unlock PowerSlide® or standard stainless steel versions

RX14 and RX16 models: Adjustable turnplate locations provide 88-168" four-wheel alignment capability (shown right)



STANDARD

Two Swing Air Jacks

An industry standard with unmatched height, reach and durability



PATENTED

Complete control

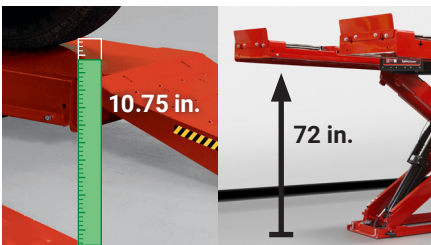
Easily control lift function, as well as PowerSlide®, Inflation Station and FIA features (if equipped)



PATENTED **OPTIONAL**

InflationStation™

Automatically fill or bleed each tire with convenient, retracting air lines



Reduced clearance issues

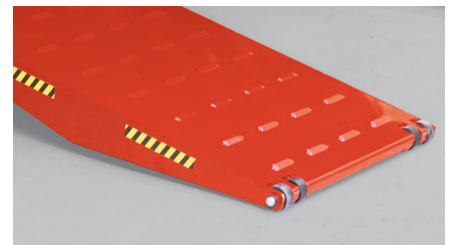
Low drive-on height and comfortable raise height gives techs less to worry about



EXCLUSIVE

Easy-to-move work steps

Sturdy, lightweight steps lock into 10 convenient rack locations



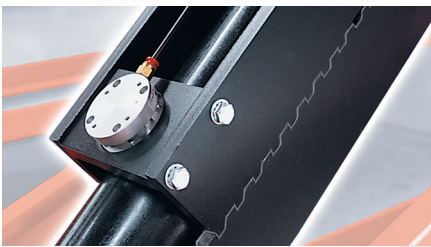
EXCLUSIVE

Louvered approach ramps

High traction prevents wheel spin, superior to diamond plate or abrasive finish



*Model RX14KLIS shown
with optional AlignLights system*



STANDARD
Sixteen lock positions

Precision-fit teeth lock runways
at 16 level height positions



PATENTED
Electronic level control

Keeps runways level at all times,
and shuts down if obstructed



STANDARD
Hydraulic safety fuses

Instantly stops lift in event of
hydraulic failure

Productivity features

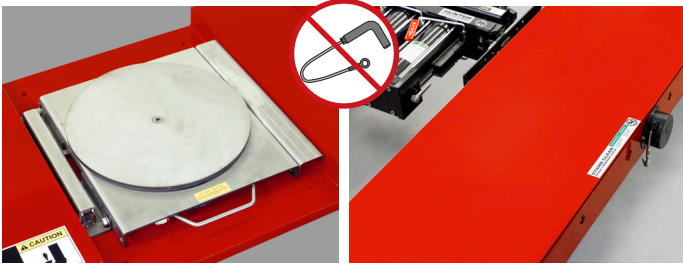
LESS WALKING, MORE ALIGNING



PATENTED

PowerSlide® edition

- ✓ Locks slipplates and turnplates from one button
- ✓ No more struggles with lock pins
- ✓ Avoid wear and tear and extend the life of your turnplates



+



+



PATENTED

Inflation Station edition

- ✓ Includes PowerSlide® slipplates and turnplates that lock and unlock automatically throughout the alignment process
- ✓ Automatically inflate all four tires simultaneously
- ✓ Record starting and final pressure*
- ✓ Hose recoils to keep work area clear

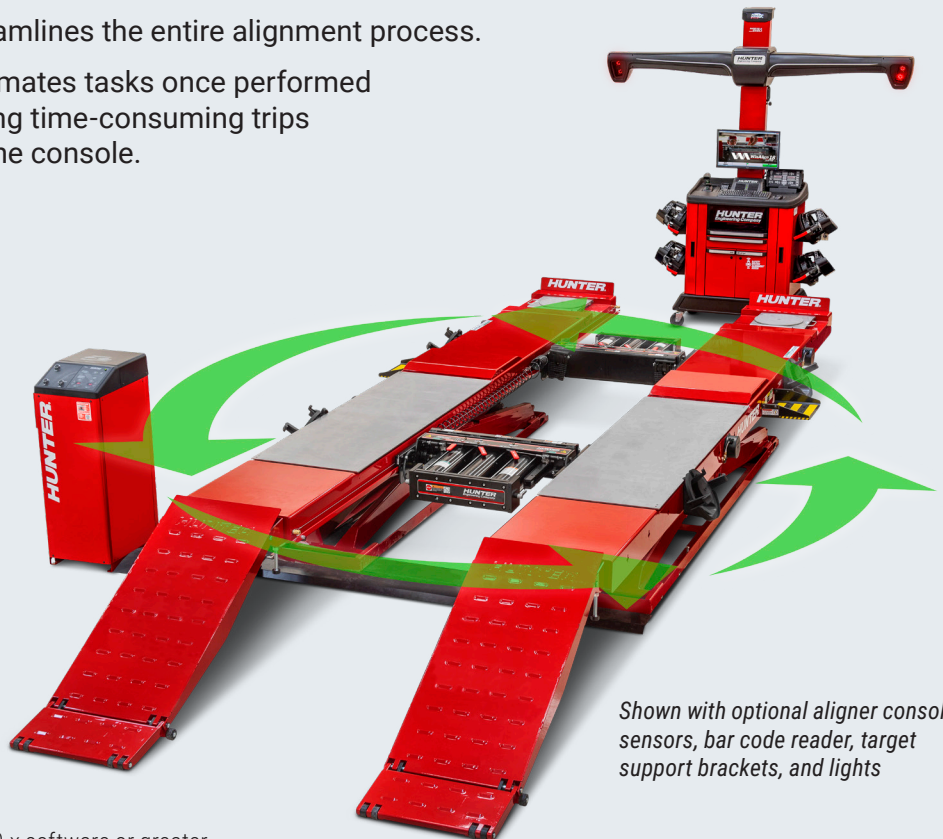


How does Fully Integrated Alignment help technicians?

Fully Integrated Alignment (FIA) streamlines the entire alignment process.

Rack-to-aligner communication automates tasks once performed by the technician manually, eliminating time-consuming trips around the vehicle and to and from the console.

- 1 Mount targets
- 2 Make adjustments
- 3 Remove targets
- 4 Jack vehicle and compensate sensors
- 5 Lower leveling legs (if equipped)
- 6 Remove slipplate and turnplate pins
- 7 Replace slipplate and turnplate pins
- 8 Raise leveling legs (if equipped)



Shown with optional aligner console, sensors, bar code reader, target support brackets, and lights

* Requires FIA-equipped aligner with WinAlign® 10.x software or greater





A PERFECT FIT IN YOUR SHOP



EXCLUSIVE **OPTIONAL**

A AlignLights system

Work with an efficient light source underneath the vehicle.

- ✓ Powered by the main lift power source – no additional cables
- ✓ Automatic on/off when lift is raised or lowered
- ✓ ALL-listed accessory.

20-3438-1 – AlignLights system for RX lifts



STANDARD

B Swing Air Jacks

Lift vehicles off the runways during alignment procedures or other multi-service operations.

- ✓ Low-profile, high-capacity for wide vehicles coverage

133-84-1 – 9,000-lb. Capacity Swing Air Jack for RX14 and RX16 lifts

133-85-1 – 6,000-lb. Capacity Swing Air Jack for RX10 and RX12 lifts



OPTIONAL

C Enhanced corrosion protection

Extend your service life.

- ✓ Zinc-rich primed and powder-coated bases, runways and ramps
- ✓ Runways caulked to prevent material intrusion
- ✓ Stainless steel slipplates and turnplates

PS and IS models are equipped with PowerSlide® turnplates. Available in red (-PRR or black -PRB) only



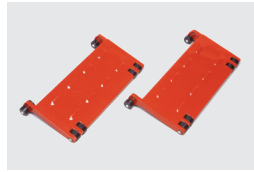
WHAT'S INCLUDED?

- ✓ Louvered ramps with built-in wheel stops
- ✓ Front wheel stops
- ✓ Two wheel chocks
- ✓ Two movable work steps
- ✓ Built-in, full-length jack rails
- ✓ Built-in air line kit

OPTIONAL

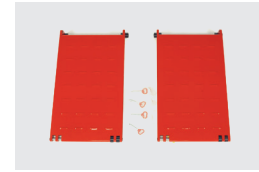
Approach ramp extensions

Lessen the ramp incline for high-slope installs and/or specialty vehicles.



17-in. kit – 20-3113-1

Adds 17.75" length to ramps for RX10K
Standard on RX12K and RX14K

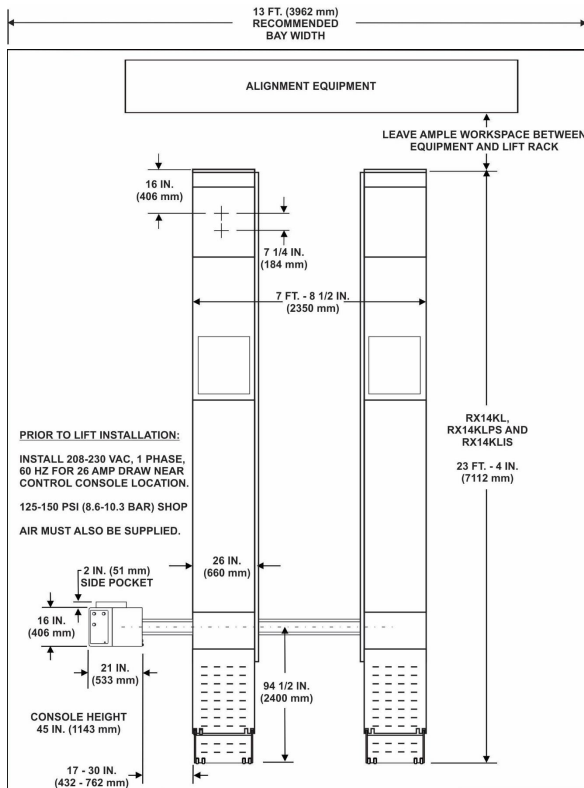


50-in. kit – 20-2189-1

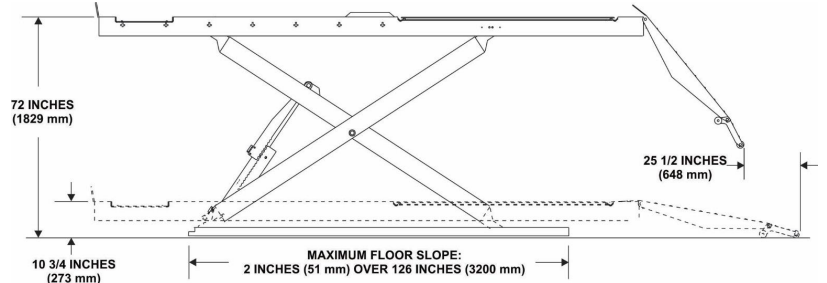
Adds 50" length to ramps for RX10K
Adds 37.25" length to ramps for RX12K and RX14K
Includes quick-release pins.

MAKE ROOM FOR PRODUCTIVITY

RX14KL plan view



RX14KL elevation view



The Hunter RX scissor lift racks are designed to take full advantage of limited spaces while functioning as a productive piece of the alignment process.

For full site requirements of any available RX lift rack, contact your local Hunter team.

SPECIFICATIONS



The Hunter RX10K, RX12K, RX14KL and RX16KL lifts have been certified under the program conducted by Automotive Lift Institute (ALI) to comply with Safety Standard ANSI/ALI ALCTV and Electrical Standard UL 201.

	RX16KLF	RX14KL	RX12K	RX10KL	RX10K
Vehicle weight capacity	16,000 lbs. (7200 kg)	14,000 lbs. (6300 kg)	12,000 lbs. (5443 kg)	10,000 lbs. (4536 kg)	10,000 lbs. (4536 kg)
Install configuration	Flush	Surface	Surface or flush		
Runway width	26 in. (660 mm)		24 in. (609 mm)		
Tread width					
Min. inside	40 in. (1016 mm)				
Max. outside	92.5 in. (2350 mm)		88 in. (2235 mm)		
Wheelbase (maximum)	surface/flush				
General service	201 in. (5105 mm)	184/180 in. (4673/4572 mm)		184/180 in. (4673/4572 mm)	171/167 in. (4343/4241 mm)
Two-wheel alignment	195 in. (4953 mm)	179/175 in. (4547/4445 mm)		179/175 in. (4547/4445 mm)	166/162 in. (4216/4115 mm)
Four-wheel alignment	168 in. (4267 mm)	158 in. (4013 mm)			
Four-wheel alignment (minimum)	88 in. (2235 mm)				
Lowered height	Ground	10.75 in. (273 mm)	10 in. (254 mm)	8.75 in. (222 mm)	
Lifting height (maximum)	70 in. (1778 mm)	72 in. (1828 mm)	71 in. (1803 mm)	72 in. (1829 mm)	
Alignment height	All lock positions				
Swing Air Jacks capacity (2 incl.)	9,000 lbs. (4082 kg)		6,000 lbs. (2721 kg)		
Air supply requirement	130-150 psi (9-10.3 bar)		90-150 psi (6.2-10.3 bar) <small>(125 psi required for full jack capacity)</small>		
Speed	Lifting: 60 seconds; lowering: 25 seconds				

Your local Hunter team is ready to help

- Receive same- or next-day service
- Get a free quote or on-site demo
- Register for ASE-accredited training courses
- General information and questions



Contact your local team

hunter.com/contact

Because of continuing technological advances, specifications, models and options are subject to change without notice.

PowerSlide and WinAlign are registered trademarks of Hunter Engineering Company. The PowerSlide logo is a trademark of Hunter Engineering Company.

HUNTER
Engineering Company

www.hunter.com