

TC37 & TC39 TYRE CHANGERS

Easy-to-use center-clamp tyre changers



Simple operation,
superior wheel protection



Leverless or traditional
mount head options



10-26 inch
rim diameters



Adjustable height
mounting



Split bead roller
system



TC39E shown with
optional wheel lift
and PowerOut™
bead loosener

Center clamp tyre changers are **COMPACT AND CAPABLE**

Damage free operation is attainable with easy-to-use center clamp tyre changers. Premium leverless demounting, intuitive clamping techniques, and three height positions assist technicians in changing a wide range of tyres — including standard car and trucks tyres, low-profile, and high-performance run flats.

EXCLUSIVE

A Split bead roller system

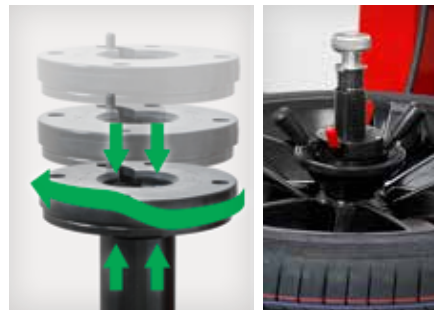
- ✓ Direct indentation speeds bead-breaking on all tyres
- ✓ Quickly demount bottom bead with lower roller
- ✓ Match-mounting made easy



PATENTED

B Center-clamp system

- ✓ Simple clamping technique
- ✓ Cam action multiplies clamping force
- ✓ Three height positions



STANDARD

C Bead press arm

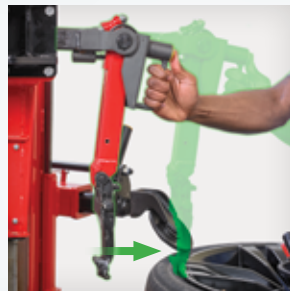
Assists mounting difficult assemblies



D Two mount head options

Leverless (TC39)

- ✓ Quickly positions bead without levers
- ✓ Prevents damage to tyre and rim



Traditional (TC37)

- ✓ Polymer construction prevents damage to tyre and rim
- ✓ Vertical locking head protects wheel face

E Blast inflation

Directs bursts of compressed air to easily seat the bead



OPTIONAL

F PowerOut™ bead loosener

- ✓ Ergonomic control handle makes operation easy
- ✓ Wheel protection sleeve included



Match-mounting and bead massage

Hunter's center-clamp tyre changers used with Road Force® wheel balancers eliminate vibration problems, reduce comebacks, and increase customer satisfaction.



The bead rollers safely hold the tyre stationary while the rim is rotated to complete match-mounting.



G Single pendant control

- ✓ Simple intuitive operation
- ✓ All controls at fingertips

H Motor and drive

- ✓ 0-14 rpm variable clockwise speed, 7 rpm counter-clockwise speed
- ✓ 1175 Nm (867 ft-lbs.) of torque

I Wheel lift option

- ✓ Eases servicing of large assemblies
- ✓ Allows for more careful handling of expensive wheels

TC39E shown with optional wheel lift and PowerOut™ bead breaker



TC37/39 SPECIFICATIONS

Rotation speed	0-14 clockwise, 7 counter-clockwise
Torque	1175 Nm (867 ft-lbs.)
Electrical requirements	208-230V, 6A, 50/60Hz
Air pressure operating range	8-12 bar (115-175 psi)
Rim diameter range	10-26 in. (254-660 mm)
Max. wheel width	19 in. (381 mm)
Max. tyre diameter	46 in. (1168 mm)
Side shovel (optional) power	2993 kg @9.6 bar (6,600 lbs. @ 140 psi)

Some dimensions, capacities, and specs may vary depending on tyre and wheel configurations.

Optional accessories



Flange plate for chrome-clad and reverse wheels RP6-G1000A87

Useful for chrome-clad wheels and/or reverse wheels where maximum finish protection is needed.



19.5" adaptor 20-2341-1

Adapts large center-bore wheels to center-clamp tyre changers.



Wheel lift for TC37/39 RP6-G1000A146

Optional wheel lift eases servicing of large assemblies. Allows for more careful handling of expensive wheels.

PowerOut™ bead loosener RP6-G1000A147

Offers powerful traditional bead-breaking



Models	TC39E	TC37E
Leverless	✓	—
Traditional	—	✓



TC37E shown

Your Hunter distributor is ready to help

- ✂ Receive same- or next-day service
- 📞 Get a free quote or on-site demo
- 📖 Register for training courses
- 📄 General information and questions



Contact your local distributor

hunter.com/contact



Because of continuing technological advances, specifications, models and options are subject to change without notice.

PowerOut is a trademark of Hunter Engineering Company.

0925DH

Copyright © 2025, Hunter Engineering Company

HUNTER
Engineering Company

www.hunter.com

11250 Hunter Drive, Bridgeton, MO 63044, USA
Tel: 1-314-731-3020, Fax: 1-314-731-0132
Email: international@hunter.com

Form CB07529-05, 09/25

Supersedes form CB07529-05, 08/22