

# SMARTWEIGHT® PRO

*Intuitive balancer with professional features*



Save weights in your shop



SmartWeight®  
technology



Error-proof  
CenteringCheck®



ExactPosition™  
weight placement



Installation and  
training included





Be the industry leader in your area

# SMARTWEIGHT® PRO AT A GLANCE



**PATENT PENDING**

## No-touch wheel measurement

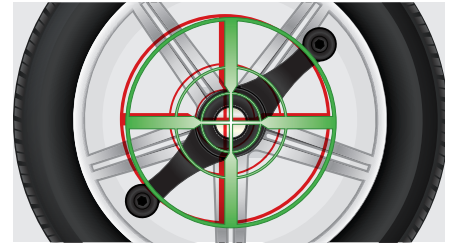
- ✓ More durable than Dataset® arms
- ✓ Full wheel measurement without contact



**STANDARD, PATENT PENDING**

## ExactPosition™

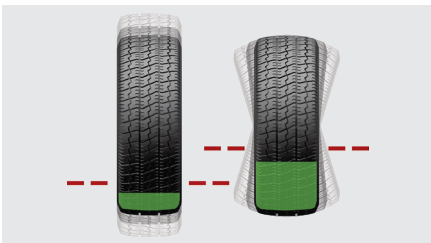
- ✓ Laser precisely identifies weight location
- ✓ Improves balance accuracy
- ✓ More durable than Dataset® arms



**PATENTED**

## CenteringCheck®

- ✓ Ensures proper centering
- ✓ Eliminates setup errors and most common cause of comebacks



**PATENTED**

## SmartWeight® technology

- ✓ Improves balance
- ✓ Minimizes weight usage
- ✓ Maximizes productivity



**OPTIONAL**

## HammerHead® option

- ✓ Speeds clip weight placement
- ✓ Improves balance
- ✓ Illuminates work area



**EXCLUSIVE**

## On-demand videos

- ✓ Simplifies training
- ✓ Improves results
- ✓ Multiple languages



**STANDARD**

## Intuitive interface

- ✓ Single-knob navigation simplifies experience
- ✓ 3D graphics

**EXCLUSIVE**

## Space-saving design

- ✓ Small format maximizes shop space
- ✓ Hood design allows machine to be installed against wall
- ✓ Ergonomic design





**SWP78** shown with  
optional BullsEye®  
collet kit



*Laser vision ensures accuracy*

# **NO-TOUCH MEASUREMENT MAKES BALANCING EASIER**

*STANDARD, PATENT PENDING*

**Easily determine  
weight placement  
using laser vision system**

- ✓ Simple dimension entry
- ✓ Automatic weight mode selection
- ✓ Indicates exact weight placement
- ✓ Eliminates most common cause of weight-chasing



*OPTIONAL (INCLUDED WITH HOOD)*

**Outer laser vision system**

- ✓ Automatically measure wheel width as hood is lowered
- ✓ Improves balance accuracy





SmartWeight® balancing technology

# SAVE TIME, WEIGHTS, AND MONEY

## Save time & effort

- ✓ Use single-weight solutions as much as **60% of the time**
- ✓ Saves labor versus traditional two-weight solutions

## Accommodate many wheel types

- ✓ Flanged or flangeless
- ✓ Plastic clad
- ✓ Colored rims
- ✓ Wider widths
- ✓ Run flats



## Stop chasing weights



- ✓ Superior balance results in a single spin

### How does SmartWeight® deliver the best balance?

**Separates hop & wobble**  
imbalance forces

**Assigns a lower threshold**  
to hop forces, similar to  
manufacturer facilities

**Hop**  
(static)



**Wobble**  
(couple)



This provides the **best balance** since  
modern vehicles are far more sensitive  
to hop than wobble.

## Improve appearance



- ✓ Smaller weights are less visible
- ✓ Places weights on inside of wheel when possible

## Track labor & weight savings



- ✓ Labor savings shown in minutes and hours as well as dollars with every spin

## Reduce weight usage

- ✓ **30% less weight used**
- ✓ Save money on every balance



### Did you know?

*Modern vehicles are approximately four times more sensitive to hop forces than wobble. Conventional balancers treat both the same.*



Exclusive

# SINGLE-KNOB INTERFACE SIMPLIFIES EXPERIENCE

0.75oz

Clearly indicates  
correction weight amount

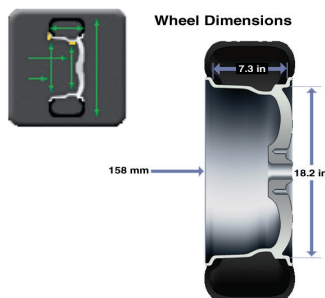


Rim cutaway displays  
selected weight mode

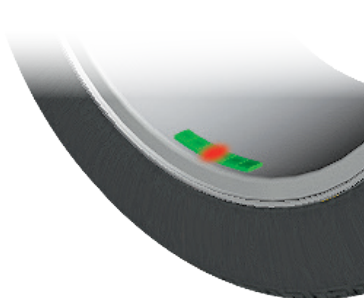


Switch text language

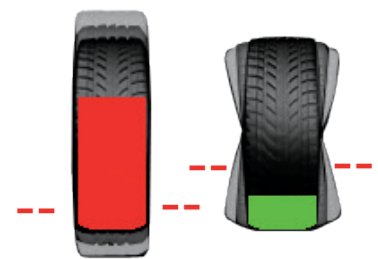
## Balancing interface at a glance



Display rim dimensions



TruWeight® provides lifelike  
representations of actual  
correction weights



SmartWeight® panel displays  
wheel balance condition



*Enhance your efficiency*

# POPULAR EQUIPMENT UPGRADES

## SpeedClamp

- ✓ Faster operation
- ✓ Consistent clamping force
- ✓ More efficient balancing



## Wheel lift

- ✓ Safely service heavy, oversized wheels
- ✓ Aids wheel centering
- ✓ Helps retain techs



## **PATENTED** HammerHead® top-dead-center laser

- ✓ Greater weight placement accuracy
- ✓ More single-spin balances improve productivity
- ✓ Overhead light illuminates work area

## BullsEye® centering system

- ✓ Optimize centering
- ✓ Prevent wheel damage



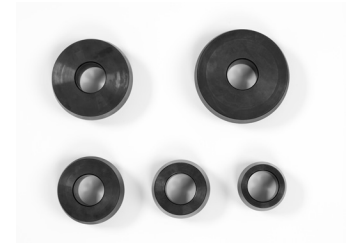
## Ergonomic QuickNut

- ✓ Fast clamping with collapsing jaws
- ✓ Comfort-grip handles



## Basic collet kit

- ✓ Handles most common wheel sizes
- ✓ Prevent wheel damage





# SMARTWEIGHT® PRO SPECIFICATIONS



**SWP78**

shown with optional BullsEye® collet kit

## Optional Equipment

- ✓ Quick Nut
- ✓ BullsEye Collets®
- ✓ HammerHead TDC Laser®
- ✓ Wheel Lift

Power requirements	208-240V, 3 amp, 50/60 Hz, 1 ph NEMA L6-20 plug included
Air supply requirements	100-175 psi (7-12 bar)
Approximate air consumption	4 CFM (110 Liters/Minute)
Internet recommendations	Hardwire or wireless add on, 10+ mbps up and down
Rim width range	1.5 in to 20 in (38 mm to 508 mm)
Rim diameter range	10 in to 30 in (254 mm to 762 mm)**
ALU	7.5 – 38 in. (191 - 965 mm)**
Max. Tire diameter	38 in (965 mm)
Max. Tire width	20 in (508 mm)
Max. Tire weight	135 lbs (61 kg)
Imbalance resolution	± 0.05 oz (1.0 g)
Placement accuracy	512 positions, ± 0.35°
Balancing speed	150 rpm
Motor	Programmable drive system and DC motor
Shipping weight	311 lbs.

	SWP-	00	06	07	08	70	76	77	78	90	96	97	98
SpeedClamp										✓	✓	✓	✓
Wheel Lift			✓	✓			✓		✓		✓		✓
Outer Laser						✓	✓	✓	✓	✓	✓	✓	✓
TDC Laser†				✓	✓			✓	✓			✓	✓
Hood						✓	✓	✓	✓	✓	✓	✓	✓

\* Wheel lift and SpeedClamp models only.

\*\* Extreme wheel sizes may require manual data entry.

† Internet recommendations apply only to units connected to HunterNet.

## Your local Hunter team is ready to help

- ✂ Receive same- or next-day service
- 📞 Get a free quote or on-site demo
- 📅 Register for ASE-accredited training courses
- 📖 General information and questions



Contact your local team

[hunter.com/contact](https://hunter.com/contact)

Because of continuing technological advances, specifications, models and options are subject to change without notice.

SmartWeight, BullsEye, HammerHead, CenteringCheck, DataSet and TruWeight are registered trademarks of Hunter Engineering Company.

**HUNTER**  
Engineering Company

[www.hunter.com](https://www.hunter.com)