



# WINALIGN® LITE

Optimized for speed and efficiency

**NEW**



Easy and safe wheel  
adapters



Capable WinAlign®  
Lite software



High durability,  
high uptime



Comprehensive  
vehicle coverage

# QUICKGRIP® WHEEL ADAPTORS & HIGH-DEFINITION TARGETS

Hunter's patented QuickGrip® adaptors and high-definition targets accelerate service with setup times in seconds instead of minutes.



**PATENTED**

## Super fast installation

- ✓ Spring-loaded arms grip the tyre
- ✓ Thumb switch secures the clamp



**PATENTED**

## Revolutionary adaptor design

- ✓ Faster setups
- ✓ No knob twisting



**PATENTED**

## Quick-change hooks

- ✓ Interchangeable arms cover up to 940 mm (37 in.) assemblies



**PATENTED**

## Avoid damage to expensive rims

- ✓ Grips tyre, not rim
- ✓ No metal-to-metal contact



**PATENTED**

## Low maintenance

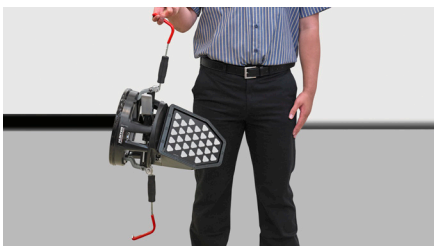
- ✓ Shop-tough to withstands drops
- ✓ No electronics, cables or necessary calibration



**PATENTED**

## Deep-wheel extension

- ✓ Deep rims or protruding hubs, no problem
- ✓ Standard accessory



**PATENTED**

## Less weight

- ✓ Weighs only 3.3 kg (7.4 lbs.)
- ✓ Nearly 40% lighter



## QuickComp™

- ✓ Compensate all wheels and capture initial measurements in one motion



# ALIGNMENT MEASUREMENTS IN JUST MINUTES

WinAlign® Lite alignment systems using HawkEye® digital imaging technology offers shops alignment service optimized for speed and efficiency with simple operation and low cost of ownership.

Digital cameras measure the position and orientation of the wheels with pinpoint accuracy using reflective targets.

## Select the vehicle

- ✓ Recall specifications



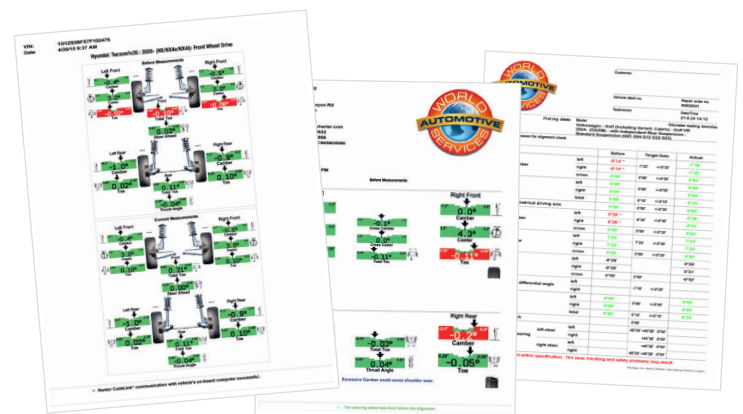
## Measure angles

- ✓ Install targets
- ✓ Capture measurements
- ✓ Review "before" results



## Make adjustments

- ✓ Follow the adjustment instructions
- ✓ Print before-and-after results



## Present your results

- ✓ Sell more alignments
- ✓ Generate greater profits



*Camera height is easily adjusted from the side of the unit.*



## Perform alignments at ANY height

The versatility of the HawkEye® digital imaging technology allows shops to perform alignments on the floor or at any lift height.



### **PATENTED**

## Reduce long-term cost of ownership

The reflective wheel targets provide a low cost of ownership and require virtually no maintenance.

- ✓ No electronics at the wheel
- ✓ No cables or batteries
- ✓ No downtime from accidental drops



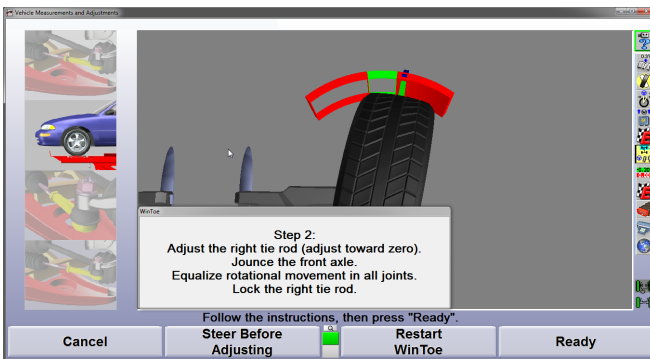
Save time and effort

# POWERFUL SOFTWARE FEATURES INCREASE PRODUCTIVITY

**EXCLUSIVE**

## WinToe® adjustments

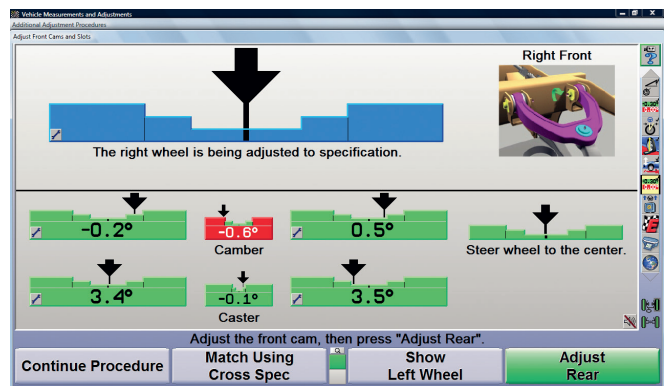
Ensure a straight steering wheel every time without repeated adjustments or using a steering wheel holder.



**STANDARD**

## Power tools

Advanced adjustments made easy with built in Power Tools to guide the way for control arms, bushings, shims, and wheel off adjustments.



**NEW EXCLUSIVE**

## Ride Height spec coverage

Easily obtain ride height based alignment specifications for BMWs, Mercedes-Benz, Peugeot, and more with built in calculations plus optional inclinometer tool.



**NEW**

## Front axle only measurement option

Quickly perform basic, front end alignments by only mounting the front axle targets. No rear target mounting required.

Find the right package for every shop

# WINALIGN® LITE CONFIGURATIONS\*

## Sensor options



**CAMERAS WITH QUICK GRIP ADAPTERS (HS223)**



**CAMERAS WITH SELF-CENTERING ADAPTERS (HS221)**



**CONVENTIONALS WITH SELF-CENTERING ADAPTERS (DSP700)**

## Camera Sensor Configurations



### **CABINET MOUNT (CM)**

Services multiple alignment bays and provides a full range of travel for additional lift height.



### **MANUAL LIFT (ML)**

Provides a full range of vertical travel for additional lift height.



### **FIXED COLUMN (FC)**

Suitable for specific alignment height ranges.



### **WALL MOUNT (WM)**

Enable the optimal use of available space.

## Options and Accessories



### **FULLY INTEGRATED ALIGNMENT**

Automatically lock and unlock Hunter turnplates and slipplates with integrated aligner.



### **HANDHELD REMOTE**

Save time and effort with remote control around the shop bay.



### **CODELINK®**

Perform steering system resets for supported vehicles.



### **REMOTE INDICATOR**

See adjustments live when working under the vehicle rear.

\* Refer to product specification sheets for more details: AS08243-00 (HS223), 7025-TE (HS221), 6089-TE (DSP700).

# TAKE CONTROL OF YOUR EQUIPMENT, NUMBERS, AND PROFITABILITY



## Connect your equipment to your business

- ✓ Maximize your shop's performance
- ✓ Simplify customer discussions with selling tools
- ✓ View extensive undercar information
- ✓ Easily download newly released or revised vehicle alignment specifications with WebSpecs®



## Your Hunter distributor is ready to help

- ✂ Receive same- or next-day service
- 📞 Get a free quote or on-site demo
- 📅 Register for training courses
- 📄 General information and questions



Contact your local distributor

[hunter.com/en-int/contact](http://hunter.com/en-int/contact)



Check out other Hunter literature for more quality products from Hunter Engineering.

Because of continuing technological advances, specifications, models and options are subject to change without notice.

WinAlign is a registered trademarks of Hunter Engineering Company.

**HUNTER**  
Engineering Company

[www.hunter.com](http://www.hunter.com)

11250 Hunter Drive, Bridgeton, MO 63044, USA  
Tel: +1-314-731-3020, Fax: +1-314-731-0132  
Email: [international@hunter.com](mailto:international@hunter.com)