

ULTIMATE ADAS[®]

Industry-leading alignment and ADAS calibration in one



Defining the standard



Laser-guided, 360°
target placements



Error-proof process
and positioning



Comprehensive
documentation



Standard-setting
alignment technology

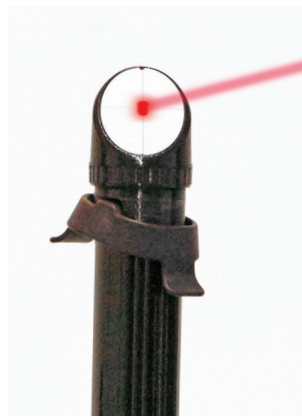


NO STRINGS. JUST LASERS.



PATENTED
Guided placement powered by laser gimbals for maximum accuracy

- ✓ Green line and red dot provide guidance
- ✓ Around-the-vehicle coverage
- ✓ Spot-on placement with time of flight



PATENT PENDING
Error-proofed procedure confirms placement

- ✓ Cameras and lasers confirm placement
- ✓ Returns tech to previous step when errors are detected



PATENT PENDING
Laser-guided target placement

- ✓ Lasers paint target location all around the vehicle
- ✓ Guided procedure provides step-by-step instruction
- ✓ No strings, plumb bobs or tape measures



World-class printouts document work

- ✓ Easily understood graphics
- ✓ Confirmed OEM specs
- ✓ Speeds payment

STANDARD-SETTING TECHNOLOGY



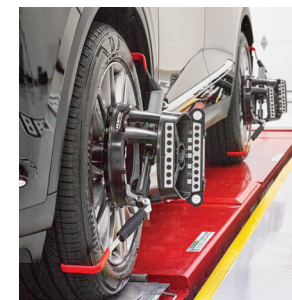
Four-camera technology improves accuracy

- ✓ Wide field of view
- ✓ Fewer camera height adjustments
- ✓ OEM approved precision



Fast, familiar technician interface simplifies procedures

- ✓ Computer-controlled fine adjustments done electromechanically and automatically



Easy setup with no wheel damage

- ✓ QuickGrip® adaptors and TD targets reference wheel position without risking wheel damage



PATENTED
Automated height, roll, pitch and yaw correction

- ✓ Motors and actuators automate and monitor tedious adjustments



HunterNet® online resources pull it all together

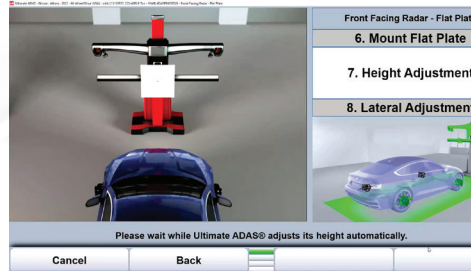
- ✓ Digital printout archive
- ✓ Coverage lookup
- ✓ Other business services and accessory ordering

THE MOST POPULAR STATIC CALIBRATIONS ARE COVERED

Front-facing radar



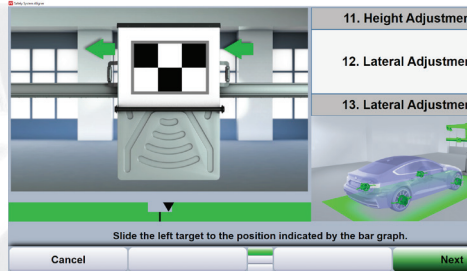
- ▶ Placement in **3:30** or less
- ▶ Confirmed placement and documentation



Forward-facing camera



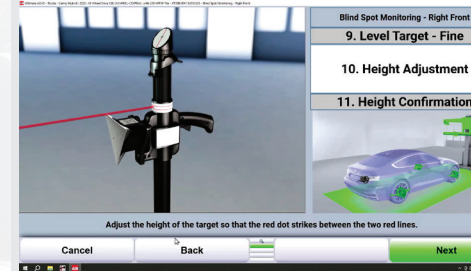
- ▶ Placement in **4:00** or less
- ▶ Confirmed placement and documentation



Front corner radar



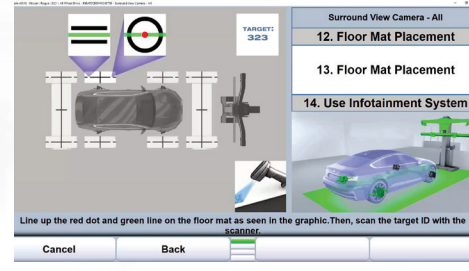
- ▶ Placement in **3:30** or less
- ▶ Confirmed placement and documentation



Surround view



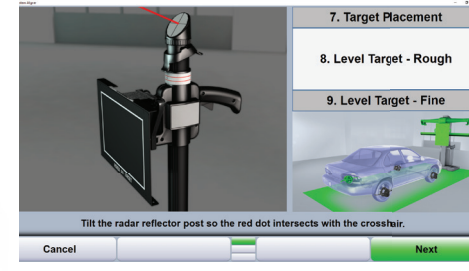
- ▶ Placement in **3:30** or less
- ▶ Confirmed placement and documentation



Blind spot / Rear corner radar



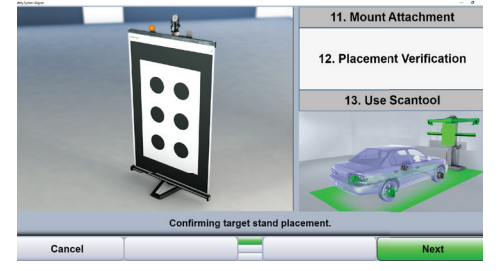
- ▶ Placement in **3:45** or less
- ▶ Confirmed placement and documentation



Side View Camera



- ▶ Placement in **4:00** or less
- ▶ Confirmed placement and documentation



ADAS CALIBRATIONS ARE AS EASY AS A WHEEL ALIGNMENT



PATENTED
Automatic unlevel floor compensation

No floor is perfect, so we remove the guesswork.



Correct for floor variation

Lasers compensate and confirm all ADAS tool placement.



PATENTED
No more strings and plumb bobs

Laser gimbals guide target placement.



PATENTED
Automated roll, pitch and yaw adjustments

Automated adjustments remove error sources.



Automated height adjustment

For alignment and ADAS.



Most precise target placement

Rail sensors align target to vehicle.



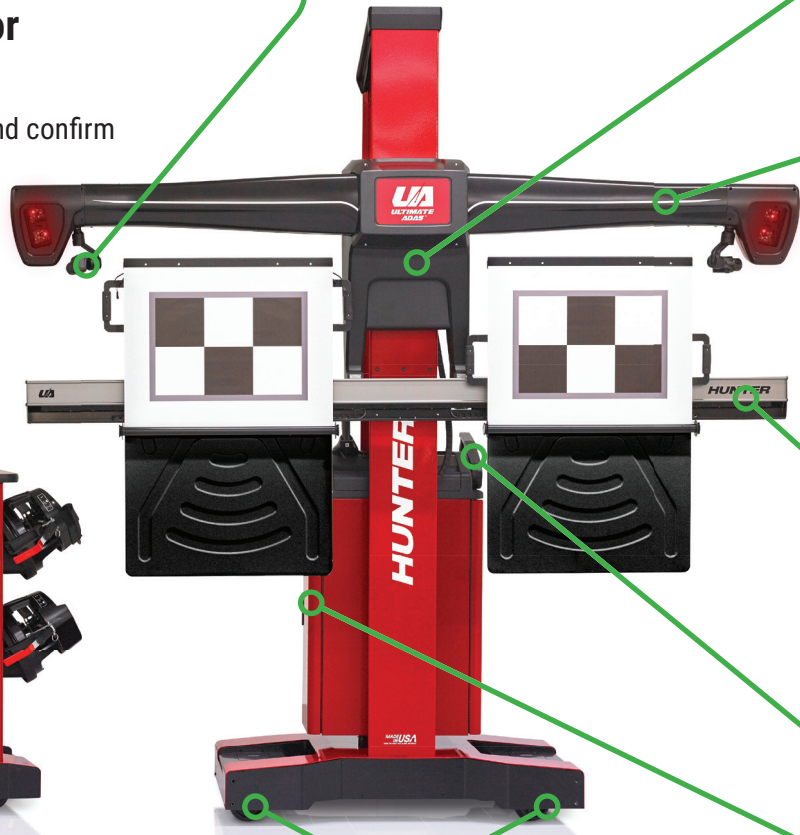
Maximize bay space

Tower maneuverable from behind or in front.



Battery backup

No need to power down when moving bay to bay.



Integrated target storage

Protect and organize your target investment.



Optional compact console

Compact work stand option with same connectivity and interface. Ideal when on-site target storage is centralized.



PATENTED
Independent brakes

Makes placement operations easy.



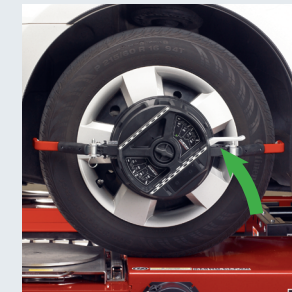
Move from bay to bay

When additional space is needed, moving Ultimate ADAS® is easy.



PATENTED
Industry's best adaptors

- ✓ Faster setups
- ✓ No metal-to-metal contact
- ✓ No knob twisting



EXCLUSIVE
Rolling comp

QuickComp compensates all wheels and captures initial measurements in one motion



STANDARD
Recall specs in a snap

Recall OE specs and vehicle-specific alignment procedures instantly



EXCLUSIVE
Faster Caster

Saves time, increases speed and reduces battery drain from brake light draw



OPTIONAL
ADASLink®

Reset computerized steering systems on a wide variety of vehicles with one simple tool

THE ULTIMATE STAND FOR REMOTE TARGETS

PATENTED

One stand for many targets



Corner Cube



Lane watch target



Blind spot target



Laser placement crosshairs

Spot-on lasers remove the need for strings and plumb bobs.

Easy height control

Quickly and precisely guided by lasers.

Location confirmed

Cameras and time-of-flight lasers lock in final location always referencing vehicle height, not stand location height.

Locking ball joint adjustment

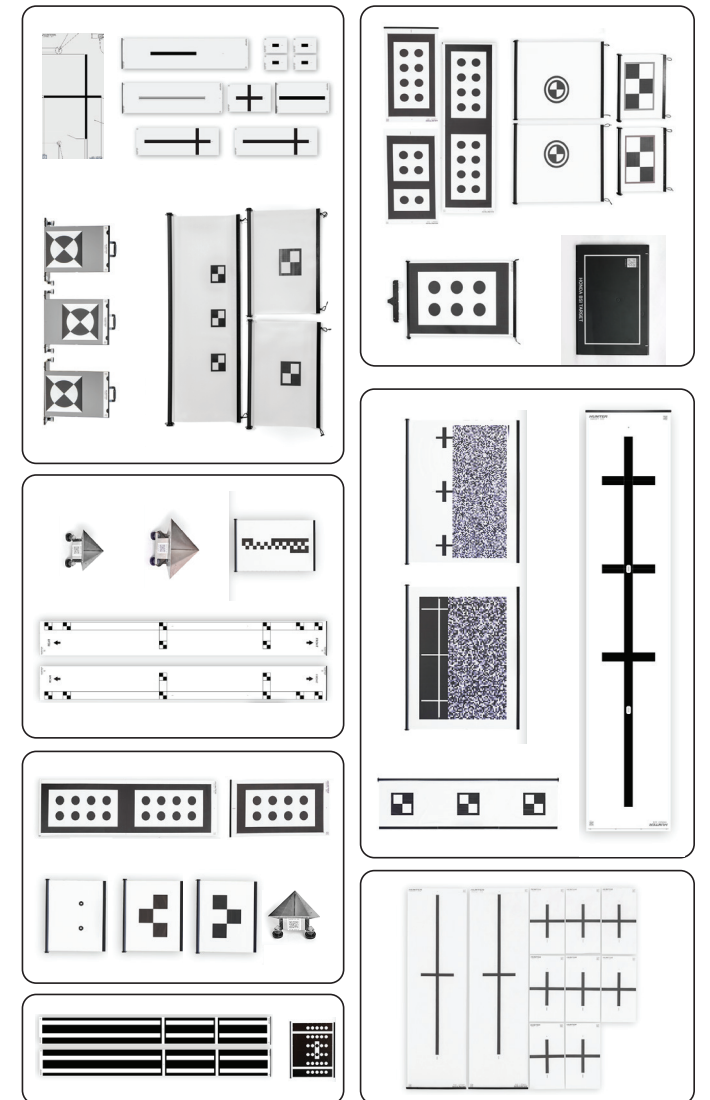
Allows target adjustment to vehicle instead of requiring a perfectly level bay.

THE MOST OEM APPROVALS IN THE BUSINESS



More approvals coming soon!

Rich library of targets for the most popular models



KEEP TRACK OF IT ALL WITH **HN² HUNTERNET**



HunterNet[®] 2 is a free portal that shows the power of your equipment investment with usage data and notifications, payback and revenue tracking, genuine Hunter consumable parts ordering, access to the latest ADAS coverage guide, and more.

Visit www.hunter.com/HN2 for more details.

STEERING SYSTEM RESETS & DYNAMIC ADAS CALIBRATIONS, AND MUCH MORE



- STEERING SYSTEM RESETS** – Quickly perform and document steering resets required after alignment using seamlessly integrated procedures.
- DYNAMIC ADAS CALIBRATIONS** – Get started with ADAS sensor resets and test drives – no extra space or fixtures required.
- PRE- & POST-SCAN** – Get a comprehensive look at vehicle's systems and codes.
- SECURE GATEWAY ACCESS** – OEM approved access to FCA, Hyundai, Kia and more vehicles.
- VALUABLE DIAGNOSTIC ABILITIES** – Review trouble codes, run special tests, electronically code/pair new parts such as EPS components, and much more.

THE DOCUMENTATION YOU NEED, PAPER AND DIGITAL

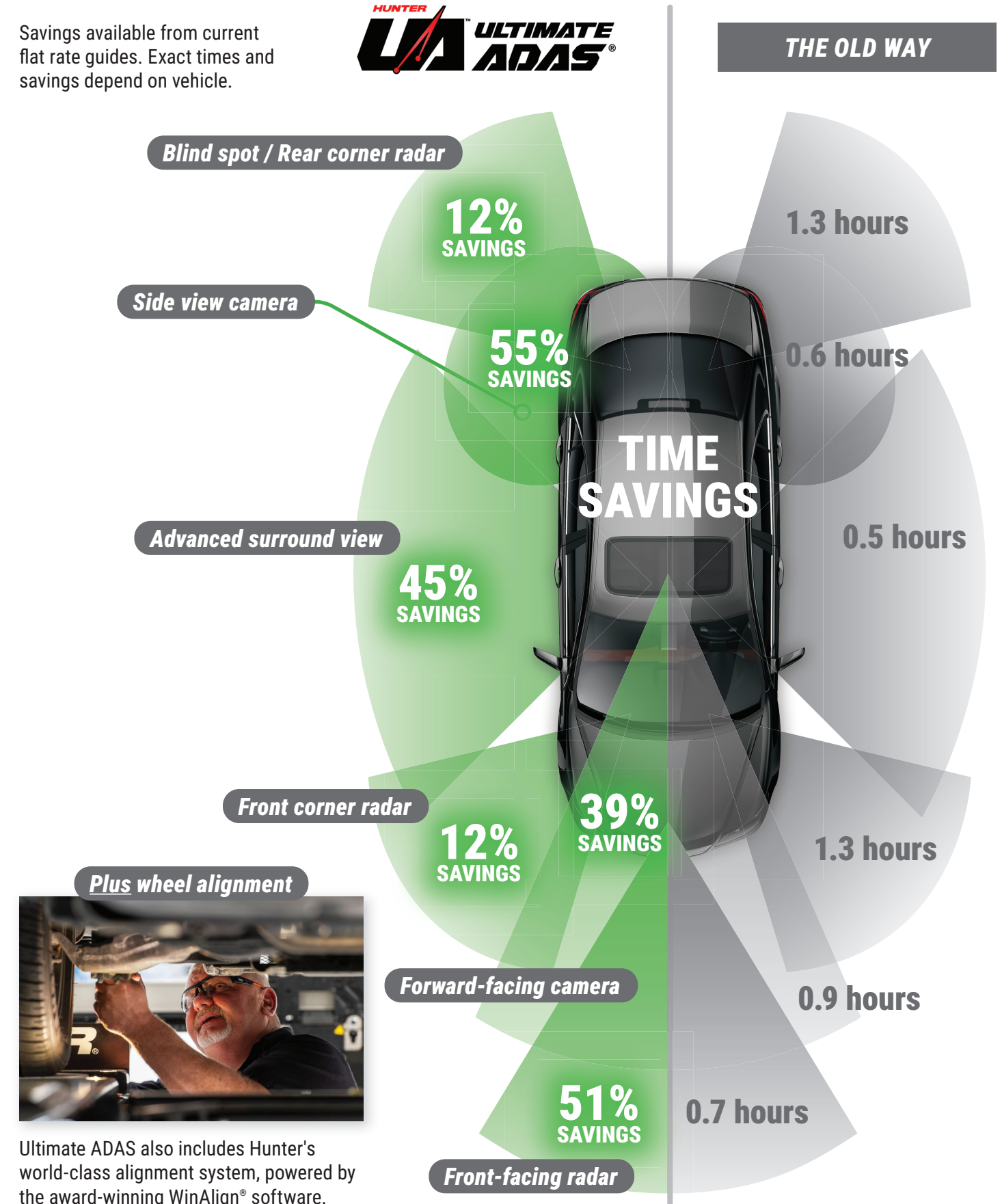
Memorialize the procedures performed

- ✓ Each ADAS calibration performed with confirmed process and placements used
- ✓ Before and after alignment results
- ✓ Steering angle sensor (SAS) reset results
- ✓ Digital report automatically archived



ULTIMATE ADAS® ECLIPSES ALL ALTERNATIVES

Savings available from current flat rate guides. Exact times and savings depend on vehicle.



Ultimate ADAS also includes Hunter's world-class alignment system, powered by the award-winning WinAlign® software.

LIVING WITH YOUR ADAS CHOICE

FIXTURE-BASED



VS



- ✗ Reserved open space accumulates "stuff" between calibrations
- ✗ Square footage is expensive

- ✗ Single purpose fixture only sees occasional use
- ✗ Damage risk to move and store

- ✓ ROI begins on day one and continues every day
- ✓ Easy to move bay to bay as needed
- ✓ Efficient packaging keeps all components together



Outfit your Ultimate ADAS package

See Ultimate ADAS® Ordering Guide AB08219-00 for target options



Your trusted service professionals

- ✂ 520+ independent Technical and Training Representatives in U.S. and Canada
- 🎓 All Reps complete a multi-week advanced training course
- 🚗 80% of Reps live within 60 miles of most customers
- 👤 On-site product training by Hunter-certified Technical and Training Reps
- ☆ 98% of customers recommend Hunter products based on service



Contact your local team

hunter.com/contact



Because of continuing technological advances, specifications, models and options are subject to change without notice.

HUNTER
Engineering Company

www.hunter.com